



Availity enterprise integration with Epic

Integrated claims clearinghouse to optimize workqueues

Given your organization's significant investment in Epic, your first priority when evaluating clearinghouse vendors is selecting one that can smoothly integrate with Epic Hospital and Professional Billing (HB and PB). Many vendors claim to offer full integration, but the reality often falls short, leaving staff pressed for time and workflows missing critical information.

But not with Availity Essentials Pro. By collaborating with Epic clients in hospitals and health systems across the country, we've built a seamless workflow where users never have to leave the Epic environment. Our shared clients are some of the most efficient in the country, boasting an average 98.8% clean claim rate and consistently ranking highly in Epic Financial Pulse KPIs.

Pre-Service Solutions

Payer denials are on the rise, and one of the most important ways to prevent them is to ensure registration and front-desk staff have the most current information, either before or at the point-of-service. Essentials Pro delivers critical payer and patient data within Epic's Prelude patient registration module, including:

- Batch and real-time eligibility (RTE) via 270/271 with value-added details like member ID cards and gaps in care
- 278 R (authorization request), I (authorization inquiry), and N (notice of admission)
- Patient Financial Profile, which includes credit score and address verification



A large Texas health system estimated

\$430K

annual savings sending cleaner claims with **Essentials Pro.**

Claims Management for HB and PB

Availity delivers deep integration with Epic's Claim Reconciliation Database (CRD), allowing users to view detailed claim status, correct clearinghouse edits, and resubmit the claim through a Workqueue—all from within the Epic system or the Availity Essentials Pro revenue cycle solution.

Eligibility

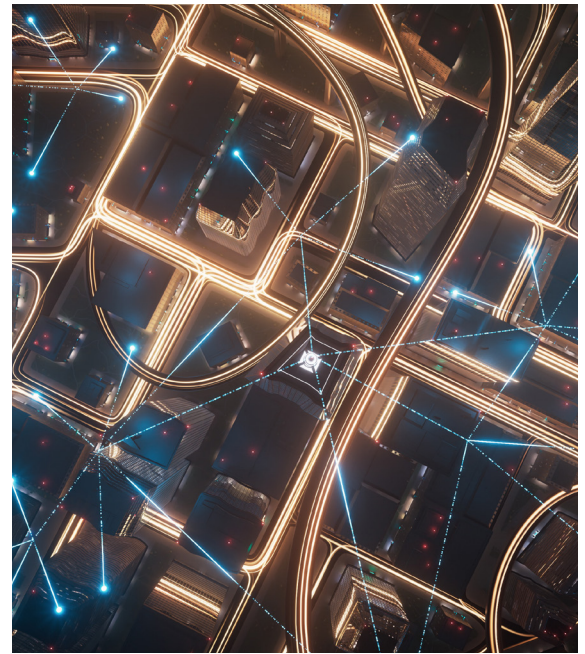
Improve revenue cycle performance with complete, up-to-date benefit and coverage information integrated into Epic. Availity checks eligibility prior to claim submission to prevent pended claims or denials. Eligibility-related errors are returned back to Epic Claim Edit Workqueues.

Claim scrubbing and transmission

Availity Essentials Pro comprehensive editing packages for both hospital and physician billing (HB/PB) claims allow users to create custom edits and rules within the claim scrubber and submit them through an all-payer network. Detailed claim status updates are returned to Epic, helping you to:

Prevent denials and get paid faster.

- Enable hospital-specific editing packages for: local and national coverage determinations (LCD/NCD), correct coding initiative (CCI) edits, medically unlikely edits (MUE), Medicare code editor (MCE), add-on code, and outpatient code editor (OCE).
- Leverage AI to identify claims likely to be denied before they're even submitted.
- Electronically submit worker's comp claims and other specialty claims with automated attachments.
- Attach supporting documentation for both professional and institutional medical claims quickly and efficiently with enhanced automated matching logic.
- Automate 276/277 real-time claim status to know right away if a claim is denied.
- Edit claims in Epic and quickly send them back to Availity for faster processing in a dedicated priority queue with Rapid Retest.



A Southeastern health system reduced eligibility-related denials by

48%

immediately after implementing **Essentials Pro**.

A prestigious academic medical system reduced denials for additional documentation by

88%

using automated attachments in **Essentials Pro**.



Save staff time.

- Stop identical resubmission of claims from Epic to prevent endless loops.
- Override Availity edits from within Epic when bypass is required.
- Define how Availity Essentials Pro claim status and error codes and messages display and return to your Epic system with customized postback rules.
- Access FISS claim status without leaving your workflow.
- Submit 837D dental claims in an integrated environment.
- Submit, edit, and track patient statements (PDF format available).



A busy Southeastern hospital system freed up

7 employees

for higher-value work by tackling their denial backlog with their **Essentials Pro** Client Success Manager.

Why Availity Essentials Pro

Partnership - Epic clients have a seat at the product innovation table through our Customer Advisory Board and annual Availity Connects conference.

Integration - Our seamless pre- and post-service workflows and innovations reflect 15+ years of collaboration and client engagement.

Optimization - The Client Success team has deep expertise working with Epic, helping even the most efficient providers meet and beat their business objectives.



Learn More

Essentials Pro, Availity's premium, all-payer clearinghouse, empowers some of the nation's largest hospitals and health systems with revenue cycle automation, AI, and expert client consultation.

A more robust sibling of the payer-sponsored Essentials portal you know, Essentials Pro is deeply integrated with most major EHRs and HIS' — especially Epic — to streamline your workflows, reduce time to payment, and increase staff efficiency.

Want to learn more about Availity's integration capabilities with Epic? Visit us at Availity.com/Epic

